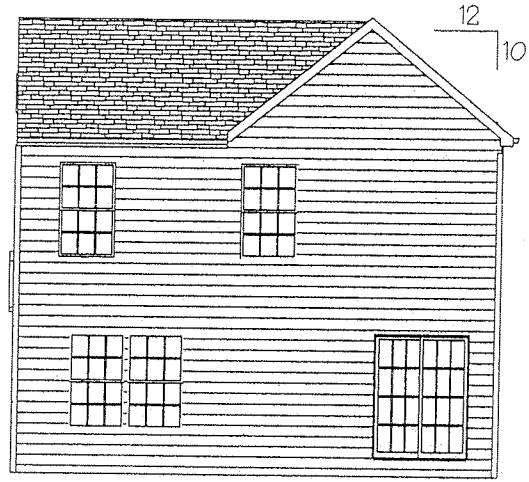


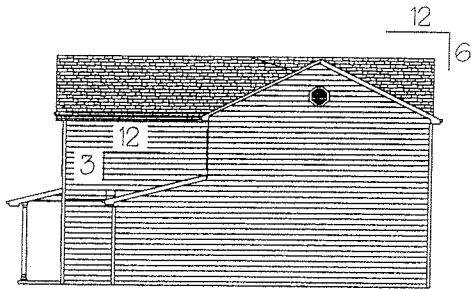
1-11



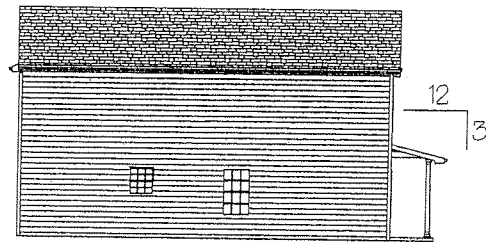
FRONT ELEVATION 1/8" = 1'-0"



REAR ELEVATION 1/8" = 1'-0"



RIGHT ELEVATION 1/16" = 1'-0"



LEFT ELEVATION 1/16" = 1'-0"

**TAHOE**  
DRAFTING  
864-525-6424

Dwn By  
*Fruitt*

Date  
09/21/05

Revised  
09/21/05

**TOWER HOMES**  
*Build for Life*

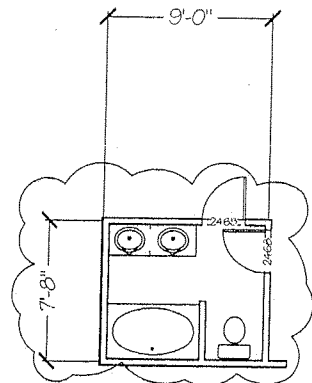
Model

**Holly**

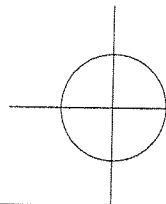
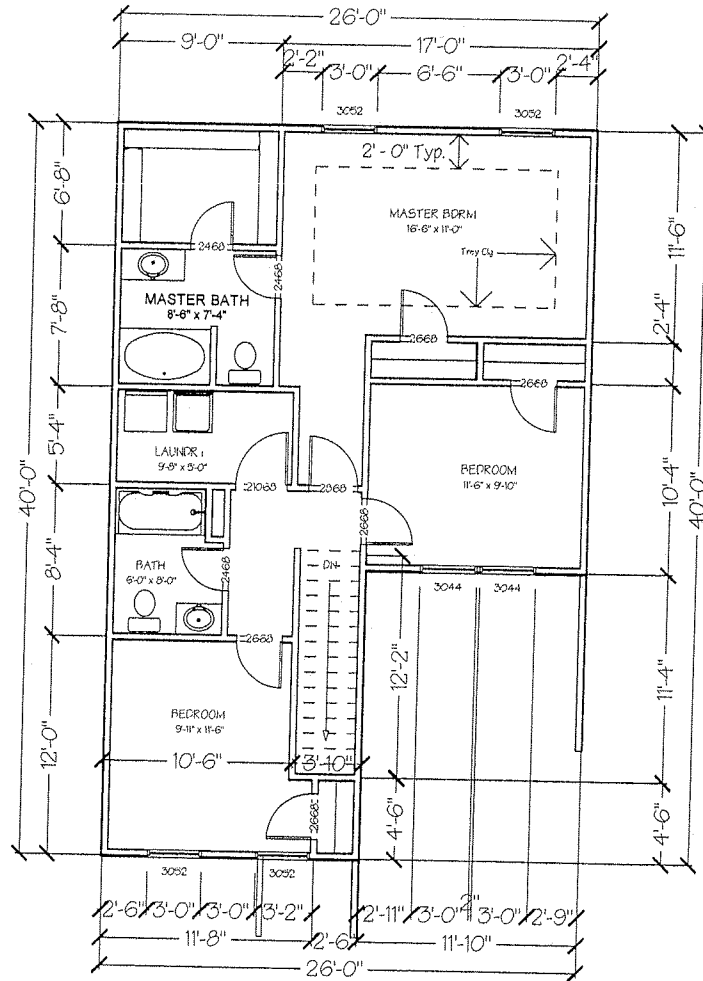
Drawing

**A-3**





Optional Master Bath



Second Floor Plan

1/8" = 1'-0"

**TAHOE DRAFTING**  
864-525-5424

Dwn By  
**Fratt**

Date  
09/21/05

Revised  
09/21/05

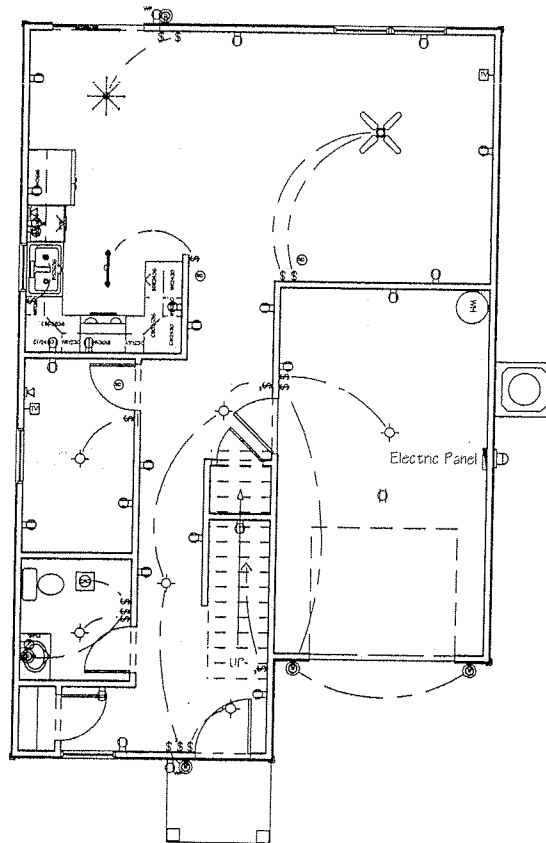
**TOWER HOMES**  
*Quality for Life*

Model

**Holly**

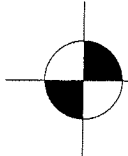
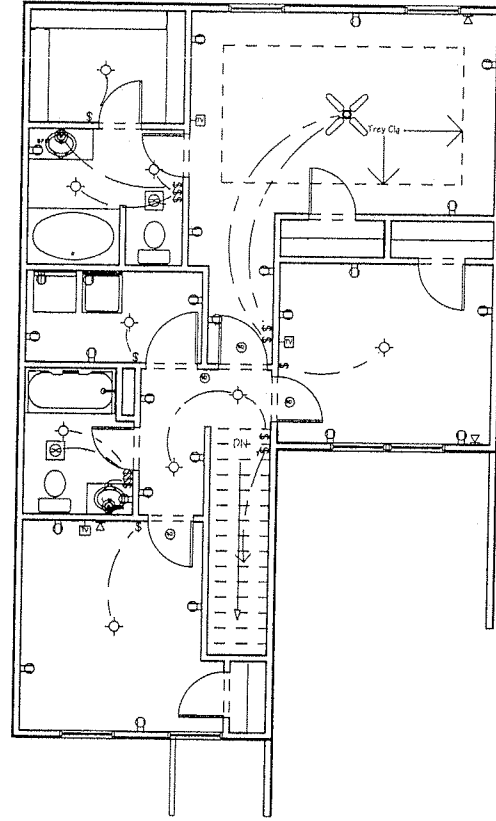
Drawing

**A-2**



QTY	FLOOR ATTACHED TO	DESCRIPTION
1	1	CEILING MOUNT LIGHT BULB
1	1	CEILING MOUNT LIGHTING FIXTURE(S)
1	1	CEILING MOUNT FERRULISH
6	1	CEILING MOUNT HALF DIMMER LIGHT
1	1	SOCKET MOUNT LIGHTHOUSE INSULATION
2	1	CEILING MOUNT SMOKE DETECTOR
1	1	CEILING MOUNT TRACK LIGHTING
1	1	CEILING MOUNT CHOCKE BLOCK OPENER OUTLET
1	1	WALL MOUNT 220V SWITCH
5	1	WALL MOUNT LAMPS
1	1	WALL MOUNT DESKTOP SHEET
25	1	WALL MOUNT POWER
2	1	WALL MOUNT POPPER WEATHERPROOF
1	1	WALL MOUNT ELECTRICAL PANEL
1	1	WALL MOUNT LAMP
14	1	WALL MOUNT SINGLE POLE
2	1	WALL MOUNT TELEPHONE JACK
2	1	WALL MOUNT TELEVISION JACK
2	1	WALL MOUNT THREE WAY
1	2	CEILING MOUNT CEILING FAN (LIGHTS)
2	2	CEILING MOUNT REMOVING
2	2	CEILING MOUNT HALF DIMMER LIGHT
1	2	WALL MOUNT 220V DRYER
2	2	WALL MOUNT LAMPS
25	2	WALL MOUNT POWER
2	2	WALL MOUNT GFCI
15	2	WALL MOUNT SINGLE POLE
2	2	WALL MOUNT TELEVISION JACK
2	2	WALL MOUNT TELEPHONE JACK
1	2	WALL MOUNT THREE WAY

FIRST FLOOR ELECTRICAL PLAN 1/8" = 1'-0"



SECOND FLOOR ELECTRICAL PLAN 1/8" = 1'-0"

**TAHOE DRAFTING**  
864-525-5424

Dwn By  
*Fratt*

Date  
09/21/05

Revised  
09/21/05

**TOWER HOMES**  
*Build for Life*

Model  
**Holly**

Drawing  
**E-2**