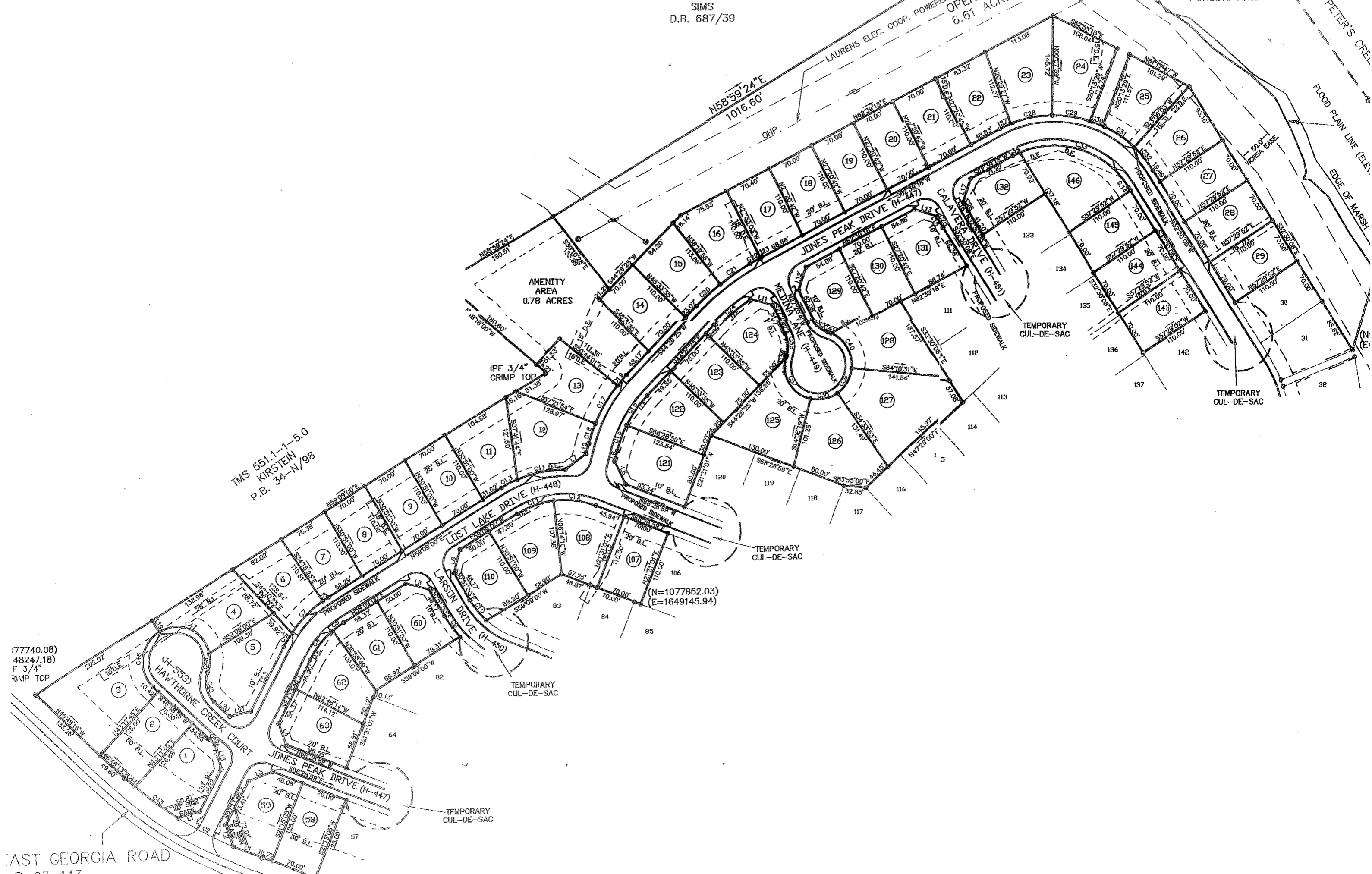


TMS 551.1-1-2.0  
SIMS  
D.B. 687/39

LAURENS ELEC. COOP. POWERLINE (VARI. OPEN SPACE)  
6.61 ACRES\*

WETLAND  
PONDING AREA

OF PETER'S CREEK  
FLOOD PLAN LINE (ELEV. ...)  
EDGE OF MARSH



TMS 551.1-1-5.0  
KIRSTEIN  
P.B. 34-N/98

177740.08)  
48247.18)  
F 3/4"  
RIMP TOP

EAST GEORGIA ROAD  
S-23-143

(N=1077852.03)  
(E=1649145.94)