

38 SHEETS OF
 1/A SHEET
 2095 JOB NO.
 1" = 100' SCALE
 11-22-99 DATE
 CHECKED
 DRAWN

**YOUNGBLOOD DEVELOPMENT CORP.
 HAMILTON PARK SUBDIVISION
 OVERALL STAKING PLAN**

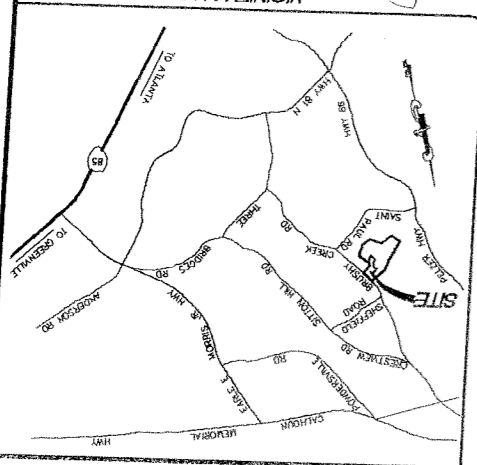
POKENS COUNTY EASTLY, SOUTH CAROLINA

POWER ENGINEERING COMPANY, INC.
 ENGINEERS - PLANNERS - SURVEYORS

PREPARED BY
POWER ENGINEERING COMPANY, INC.
 ENGINEERS - PLANNERS - SURVEYORS

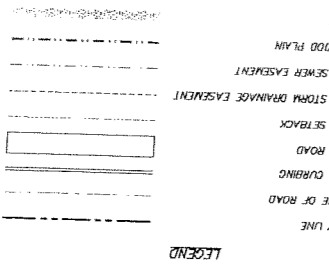
COLUMBIA, SC CHARLOTTE, NC

REVISIONS	BY	DATE	DESCRIPTION
PER CITY OF EASLEY COMMENTS 12-29-99	S.O.M.		
PER COMMENTS 1-18-2000	D.E.B.		
PER COMMENTS 1-27-2000	D.E.B.		
PER CITY OF EASLEY COMMENTS 07-08-04	A.M.R.		



NOTE: ALL WORK WITHIN THE RIGHT OF WAY SHALL BE IN ACCORDANCE WITH THE APPROVED ENCROACHMENT PERMIT.

DIMENSIONS SHOWN ARE TO BACK OF CURB



SITE INFORMATION

TOTAL AREA = 60.49 ACRES
 TOTAL NO. LOTS = 188
 MAN. LOT SIZE = 30.927 SQ. FT. (0.71 AC.) (LOT #127)
 SQUARE FT. OF PAVING = 187,501 SQ. FT.
 FEET OF CURBING = 16,048 LF

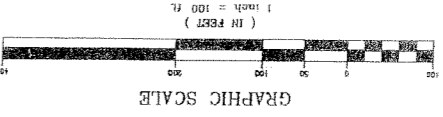
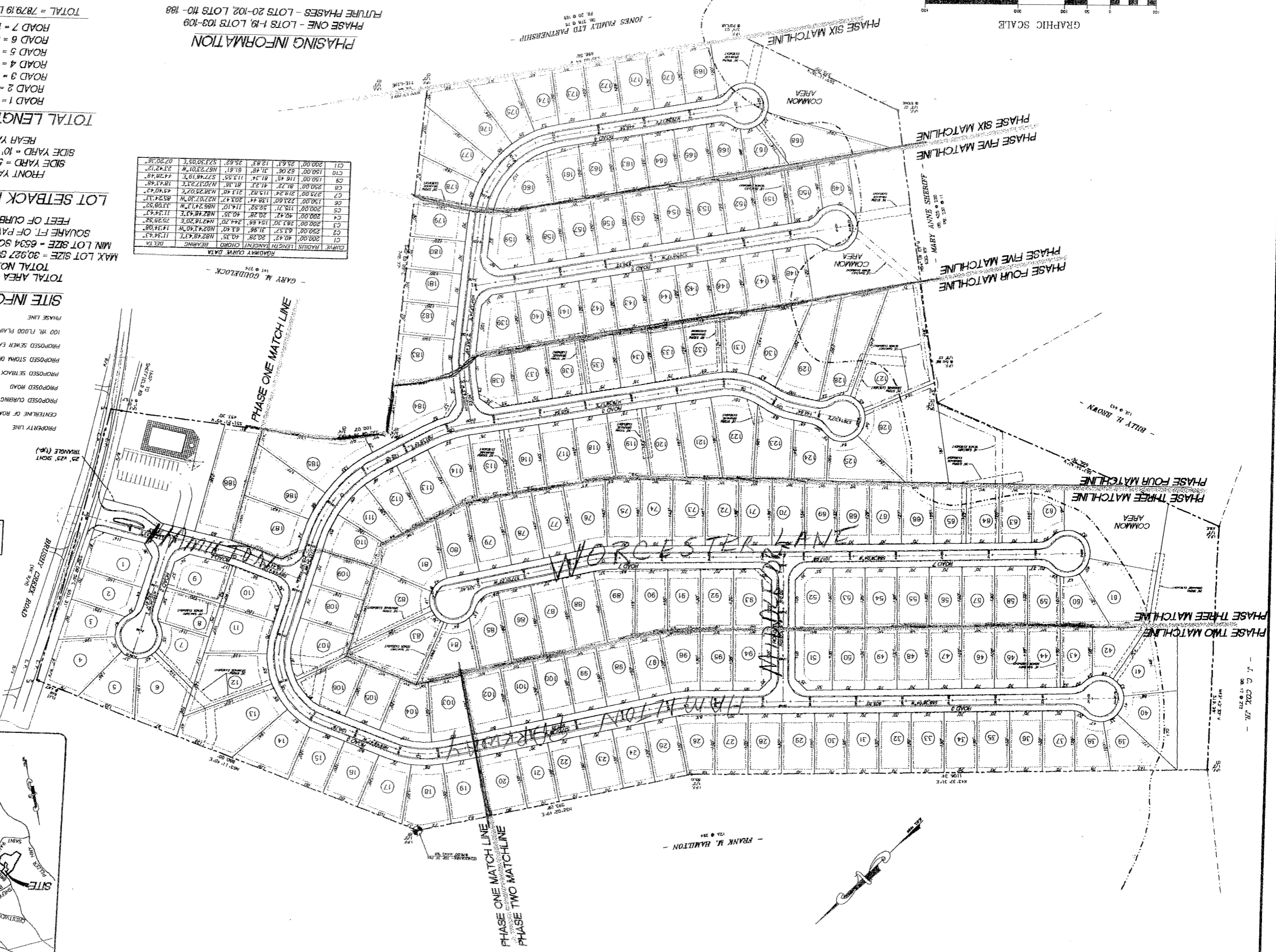
LOT SETBACK REQUIREMENTS

FRONT YARD = 20'
 SIDE YARD = 5' INTERIOR
 SIDE YARD = 10' EXTERIOR
 REAR YARD = 10'

TOTAL LENGTH OF ROADS

ROAD 1 = 485.60 LF
 ROAD 2 = 259.41 LF
 ROAD 3 = 3457.16 LF
 ROAD 4 = 1150.00 LF
 ROAD 5 = 829.22 LF
 ROAD 6 = 300.00 LF
 ROAD 7 = 1397.80 LF
 TOTAL = 7879.19 LF OR 1.49 MILES

CURVE	RADIUS	LENGTH	BEARING	DELTA
C1	200.00'	40.42'	N82°48'43"E	11°34'43"
C2	200.00'	40.42'	S82°48'43"W	11°34'43"
C3	200.00'	40.42'	N82°48'43"E	11°34'43"
C4	200.00'	40.42'	S82°48'43"W	11°34'43"
C5	200.00'	40.42'	N82°48'43"E	11°34'43"
C6	200.00'	40.42'	S82°48'43"W	11°34'43"
C7	200.00'	40.42'	N82°48'43"E	11°34'43"
C8	200.00'	40.42'	S82°48'43"W	11°34'43"
C9	200.00'	40.42'	N82°48'43"E	11°34'43"
C10	200.00'	40.42'	S82°48'43"W	11°34'43"



EXISTING CONDITIONS SHOWN ARE BASED ON SURVEY FOR HAZELBANK, INC. POWER ENGINEERING COMPANY, INC. ASSUMES NO RESPONSIBILITY FOR EXISTING CONDITIONS SHOWN.

ENGINEER: POWER ENGINEERING CO. INC.
 138 WESTPARK BLVD. #100
 COLUMBIA, SC 29210
 (803) 216-8777