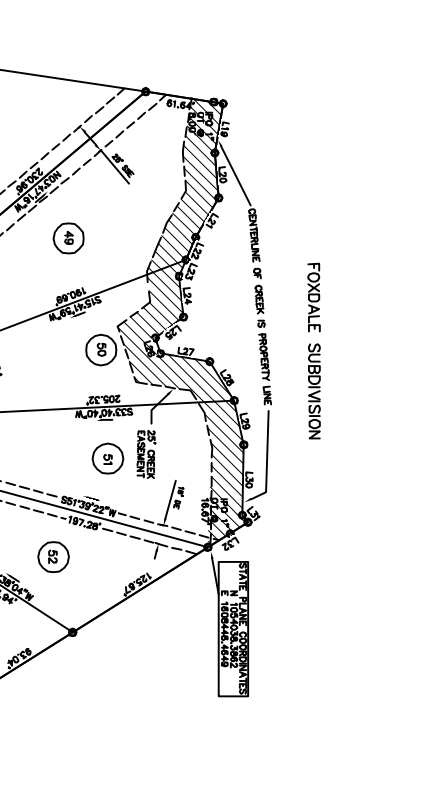
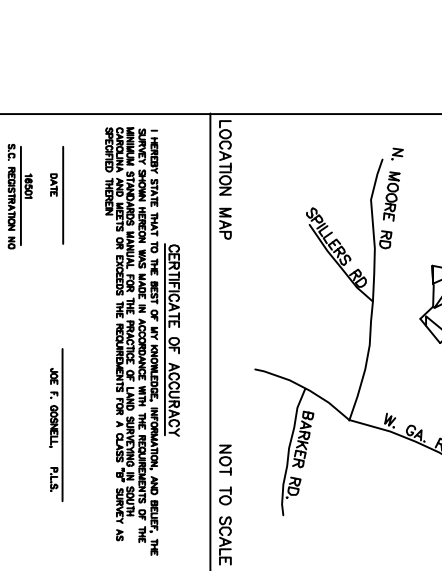


LOT #	AREA	ACRES
LOT 1	0.00	0.00
LOT 2	0.00	0.00
LOT 3	0.00	0.00
LOT 4	0.00	0.00
LOT 5	0.00	0.00
LOT 6	0.00	0.00
LOT 7	0.00	0.00
LOT 8	0.00	0.00
LOT 9	0.00	0.00
LOT 10	0.00	0.00
LOT 11	0.00	0.00
LOT 12	0.00	0.00
LOT 13	0.00	0.00
LOT 14	0.00	0.00
LOT 15	0.00	0.00
LOT 16	0.00	0.00
LOT 17	0.00	0.00
LOT 18	0.00	0.00
LOT 19	0.00	0.00
LOT 20	0.00	0.00
LOT 21	0.00	0.00
LOT 22	0.00	0.00
LOT 23	0.00	0.00
LOT 24	0.00	0.00
LOT 25	0.00	0.00
LOT 26	0.00	0.00
LOT 27	0.00	0.00
LOT 28	0.00	0.00
LOT 29	0.00	0.00
LOT 30	0.00	0.00
LOT 31	0.00	0.00
LOT 32	0.00	0.00
LOT 33	0.00	0.00
LOT 34	0.00	0.00
LOT 35	0.00	0.00
LOT 36	0.00	0.00
LOT 37	0.00	0.00
LOT 38	0.00	0.00
LOT 39	0.00	0.00
LOT 40	0.00	0.00
LOT 41	0.00	0.00
LOT 42	0.00	0.00
LOT 43	0.00	0.00
LOT 44	0.00	0.00
LOT 45	0.00	0.00
LOT 46	0.00	0.00
LOT 47	0.00	0.00
LOT 48	0.00	0.00
LOT 49	0.00	0.00
LOT 50	0.00	0.00
LOT 51	0.00	0.00
LOT 52	0.00	0.00
LOT 53	0.00	0.00
LOT 54	0.00	0.00
LOT 55	0.00	0.00
LOT 56	0.00	0.00
LOT 57	0.00	0.00
LOT 58	0.00	0.00
LOT 59	0.00	0.00
LOT 60	0.00	0.00
LOT 61	0.00	0.00
LOT 62	0.00	0.00
LOT 63	0.00	0.00
LOT 64	0.00	0.00
LOT 65	0.00	0.00
LOT 66	0.00	0.00
LOT 67	0.00	0.00
LOT 68	0.00	0.00
LOT 69	0.00	0.00
LOT 70	0.00	0.00
LOT 71	0.00	0.00
LOT 72	0.00	0.00
LOT 73	0.00	0.00
LOT 74	0.00	0.00
LOT 75	0.00	0.00
LOT 76	0.00	0.00
LOT 77	0.00	0.00
LOT 78	0.00	0.00
LOT 79	0.00	0.00
LOT 80	0.00	0.00
LOT 81	0.00	0.00
LOT 82	0.00	0.00
LOT 83	0.00	0.00
LOT 84	0.00	0.00
LOT 85	0.00	0.00
LOT 86	0.00	0.00
LOT 87	0.00	0.00
LOT 88	0.00	0.00
LOT 89	0.00	0.00
LOT 90	0.00	0.00
LOT 91	0.00	0.00
LOT 92	0.00	0.00
LOT 93	0.00	0.00
LOT 94	0.00	0.00
LOT 95	0.00	0.00
LOT 96	0.00	0.00
LOT 97	0.00	0.00
LOT 98	0.00	0.00
LOT 99	0.00	0.00
LOT 100	0.00	0.00
LOT 101	0.00	0.00
LOT 102	0.00	0.00
LOT 103	0.00	0.00
LOT 104	0.00	0.00
LOT 105	0.00	0.00
LOT 106	0.00	0.00
LOT 107	0.00	0.00
LOT 108	0.00	0.00
LOT 109	0.00	0.00
LOT 110	0.00	0.00



LINE	LENGTH	BEARING	AREA
L1	32.72	N67°22'42"E	10.84
L2	28.63	S82°21'17"E	20.65
L3	28.63	S82°21'17"E	20.65
L4	30.00	S82°21'17"E	23.84
L5	30.00	S82°21'17"E	23.84
L6	30.00	S82°21'17"E	23.84
L7	30.00	S82°21'17"E	23.84
L8	30.00	S82°21'17"E	23.84
L9	30.00	S82°21'17"E	23.84
L10	30.00	S82°21'17"E	23.84
L11	30.00	S82°21'17"E	23.84
L12	30.00	S82°21'17"E	23.84
L13	30.00	S82°21'17"E	23.84
L14	30.00	S82°21'17"E	23.84
L15	30.00	S82°21'17"E	23.84
L16	30.00	S82°21'17"E	23.84
L17	30.00	S82°21'17"E	23.84
L18	30.00	S82°21'17"E	23.84
L19	30.00	S82°21'17"E	23.84
L20	30.00	S82°21'17"E	23.84
L21	30.00	S82°21'17"E	23.84
L22	30.00	S82°21'17"E	23.84
L23	30.00	S82°21'17"E	23.84
L24	30.00	S82°21'17"E	23.84
L25	30.00	S82°21'17"E	23.84
L26	30.00	S82°21'17"E	23.84
L27	30.00	S82°21'17"E	23.84
L28	30.00	S82°21'17"E	23.84
L29	30.00	S82°21'17"E	23.84
L30	30.00	S82°21'17"E	23.84
L31	30.00	S82°21'17"E	23.84
L32	30.00	S82°21'17"E	23.84
L33	30.00	S82°21'17"E	23.84
L34	30.00	S82°21'17"E	23.84
L35	30.00	S82°21'17"E	23.84
L36	30.00	S82°21'17"E	23.84
L37	30.00	S82°21'17"E	23.84
L38	30.00	S82°21'17"E	23.84
L39	30.00	S82°21'17"E	23.84
L40	30.00	S82°21'17"E	23.84
L41	30.00	S82°21'17"E	23.84
L42	30.00	S82°21'17"E	23.84
L43	30.00	S82°21'17"E	23.84
L44	30.00	S82°21'17"E	23.84
L45	30.00	S82°21'17"E	23.84
L46	30.00	S82°21'17"E	23.84
L47	30.00	S82°21'17"E	23.84
L48	30.00	S82°21'17"E	23.84
L49	30.00	S82°21'17"E	23.84
L50	30.00	S82°21'17"E	23.84
L51	30.00	S82°21'17"E	23.84
L52	30.00	S82°21'17"E	23.84
L53	30.00	S82°21'17"E	23.84
L54	30.00	S82°21'17"E	23.84
L55	30.00	S82°21'17"E	23.84
L56	30.00	S82°21'17"E	23.84
L57	30.00	S82°21'17"E	23.84
L58	30.00	S82°21'17"E	23.84
L59	30.00	S82°21'17"E	23.84
L60	30.00	S82°21'17"E	23.84
L61	30.00	S82°21'17"E	23.84
L62	30.00	S82°21'17"E	23.84
L63	30.00	S82°21'17"E	23.84
L64	30.00	S82°21'17"E	23.84
L65	30.00	S82°21'17"E	23.84
L66	30.00	S82°21'17"E	23.84
L67	30.00	S82°21'17"E	23.84
L68	30.00	S82°21'17"E	23.84
L69	30.00	S82°21'17"E	23.84
L70	30.00	S82°21'17"E	23.84
L71	30.00	S82°21'17"E	23.84
L72	30.00	S82°21'17"E	23.84
L73	30.00	S82°21'17"E	23.84
L74	30.00	S82°21'17"E	23.84
L75	30.00	S82°21'17"E	23.84
L76	30.00	S82°21'17"E	23.84
L77	30.00	S82°21'17"E	23.84
L78	30.00	S82°21'17"E	23.84
L79	30.00	S82°21'17"E	23.84
L80	30.00	S82°21'17"E	23.84
L81	30.00	S82°21'17"E	23.84
L82	30.00	S82°21'17"E	23.84
L83	30.00	S82°21'17"E	23.84
L84	30.00	S82°21'17"E	23.84
L85	30.00	S82°21'17"E	23.84
L86	30.00	S82°21'17"E	23.84
L87	30.00	S82°21'17"E	23.84
L88	30.00	S82°21'17"E	23.84
L89	30.00	S82°21'17"E	23.84
L90	30.00	S82°21'17"E	23.84
L91	30.00	S82°21'17"E	23.84
L92	30.00	S82°21'17"E	23.84
L93	30.00	S82°21'17"E	23.84
L94	30.00	S82°21'17"E	23.84
L95	30.00	S82°21'17"E	23.84
L96	30.00	S82°21'17"E	23.84
L97	30.00	S82°21'17"E	23.84
L98	30.00	S82°21'17"E	23.84
L99	30.00	S82°21'17"E	23.84
L100	30.00	S82°21'17"E	23.84
L101	30.00	S82°21'17"E	23.84
L102	30.00	S82°21'17"E	23.84
L103	30.00	S82°21'17"E	23.84
L104	30.00	S82°21'17"E	23.84
L105	30.00	S82°21'17"E	23.84
L106	30.00	S82°21'17"E	23.84
L107	30.00	S82°21'17"E	23.84
L108	30.00	S82°21'17"E	23.84
L109	30.00	S82°21'17"E	23.84
L110	30.00	S82°21'17"E	23.84



**CERTIFICATE OF OWNERSHIP AND DEDICATION**  
 THE UNDERSIGNED HEREBY ACKNOWLEDGE THAT I AM (WE AND THE OWNERS) OF THE PROPERTY SHOWN AND DESCRIBED HEREON AND THAT I (WE) HEREBY ADAPT THIS PLAN MINIMUM BUILDING RESTRICTION LINES AND HEREBY DEDICATE TO PUBLIC USE AS ROADS, STREETS, AND EASEMENTS, TOGETHER ALL AREAS SO SHOWN OR INDICATED ON SAID PLAN, PREPARED HEREON.  
 DATE: \_\_\_\_\_ J.E.F. OSWELL, P.L.S.  
 S.C. REGISTRATION NO. 14501

**OLLIE & JOEL L. SMITH**  
 TMS. 574.4-1-13.10  
 D.B. 2054 - 481  
 P.B. 39 S - 89

**EDITH A. GRANDE**  
 TMS. 574.4-1-12.00  
 D.B. 1655 - 1425  
 P.B. 29 H - 22

**CAROL SUZANNE JAFFE, TRUSTEE**  
 TMS. 574.4-1-11.00  
 D.B. 2035 - 1027  
 P.B. TT - 63

**NOTES:**  
 1) TMS. 574.4-1-13.00  
 2) THE PROPERTY CORNERS ARE PER 9/97 RECORDS, UNLESS NOTED OTHERWISE.  
 3) AS A MINIMUM, 5' PERMANENT AND UTILITY EASEMENTS ESTABLISHED ALONG ALL SIDES AND INTERIOR REAR PROPERTY LINES. 10' EASEMENTS ESTABLISHED ALONG ALL SIDES AND INTERIOR REAR PROPERTY LINES OF EASEMENTS ESTABLISHED ESTABLISHED EASEMENTS.  
 4) SURVEYOR MANAGEMENT & DESIGN REVISION PLAN HAS BEEN APPROVED BY THE BOARD OF SURVEYORS AND ENGINEERS.  
 5) THIS PROPERTY IS NOT LOCATED IN A FLOOD HAZARD AREA PER FEMA MAP 48060C 0481 D DATED DECEMBER 2, 2004.

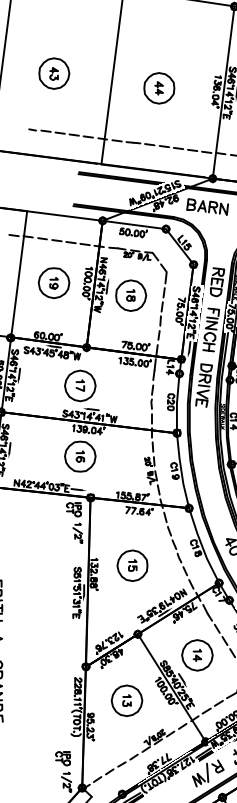
**10' BEAUTIFICATION EASEMENT**

**CEDAR GLEN PHASE 2 SHEET 1**

**SDI** SURVEYOR  
 SITE DESIGN, INC.  
 800 E. Washington Street, Suite B  
 Greenville, SC 29601  
 OWNER: SUNNIBROOK, LLC  
 235 BANNERBROOK DR.  
 SUNNIBROOK, SC 29680

**CEDAR GLEN PHASE 2 SHEET 1**

**NO. OF ADRES: 8.40**    **MILES OF NEW ROAD: 0.30**  
**NO. OF LOTS: 33**    **DATE: 3-17-05**  
**ERROR OF CLOSURE: 1:15,000**  
**CURRENT ZONING: R-7.5 & R-12**  
**SCALE: 1" = 60'**



**42** **43** **44** **45** **46** **47** **48** **49** **50** **51** **52** **53** **54** **55** **56** **57** **58** **59** **60** **61** **62** **63**

**42** **43** **44** **45** **46** **47** **48** **49** **50** **51** **52** **53** **54** **55** **56** **57** **58** **59** **60** **61** **62** **63**

**42** **43** **44** **45** **46** **47** **48** **49** **50** **51** **52** **53** **54** **55** **56** **57** **58** **59** **60** **61** **62** **63**